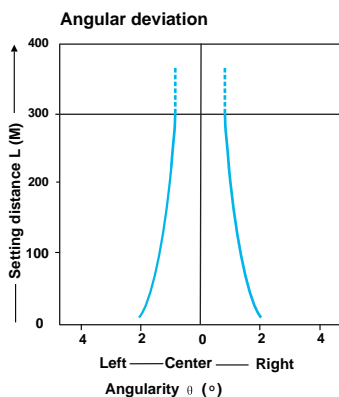
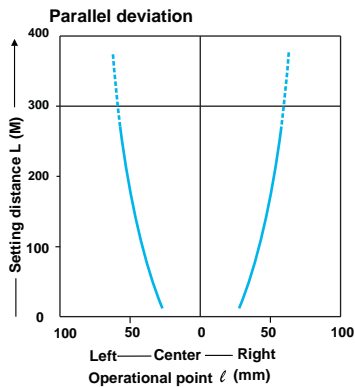


# RT-350 Series

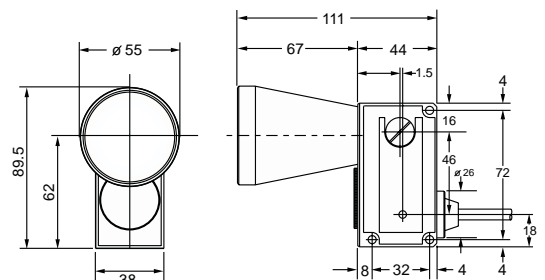
## Long Distance Thru-beam Photoelectric Sensor



Type	Long Distance Thru-beam Photoelectric Sensor	
Model Number	<b>RT-350-N</b>	<b>RT-350-P</b>
Sensing Range	350 meter	
Light Source	Infrared LED (880 nm)	
Supply Voltage	10 ~ 30 VDC incl. 10% ripple	
Output	NPN transistor 100 mA	PNP transistor 100 mA
Connection	2 meter cable	



### • Dimensions (mm)



### • Mount (mm)

