

Inductive Proximity Sensor 8 mm Smooth Barrel

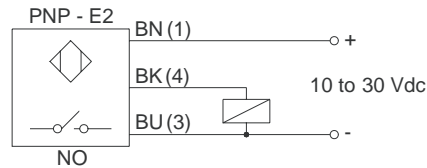
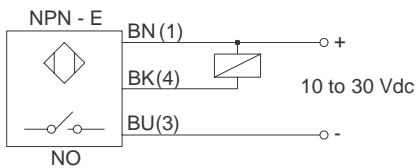
Specifications

Type			Inductive Proximity Sensor	
			Shielded - Flush Mount	Non-shielded - Non-flush Mount
Model Number	Cable Type	NPN	PS1.5-8-45-E	PS2-8-45-E
		PNP	PS1.5-8-45-E2	PS2-8-45-E2
	M8 QD Type	NPN	----	----
		PNP	----	----
Sensing Range			1.5 mm	2 mm
Hysteresis			5 %	
Repeatability			< 0.01 mm	
Supply Voltage			10 ~ 30 VDC incl. 10% ripple	
Current Consumption			< 10 mA max.	
Max. Switching Freq.			1 kHz	600 Hz
Control Output			NPN or PNP Open Collector Transistor, 100 mA / 30 VDC Max.	
Operation Mode			Normally Open	
Output Protection			Short circuit and Reverse polarity protection	
Sensitivity Adjustment			----	
Indicators			Output LED	
Conformity			CE	
Ambient Temperature			-25° to +70°C	
IP Protection			IP67	
Material			Nickel plated brass	



Note: Cables are not included with the QD sensor, please order separately.

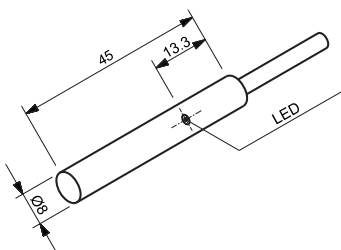
Electrical Connection



Dimensions (Unit: mm)

PS1.5-8-45

Shielded



PS2-8-45

Non-Shielded

