

# Capacitive Proximity Sensor 18 mm Threaded Barrel

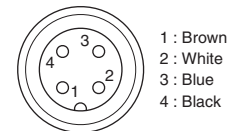
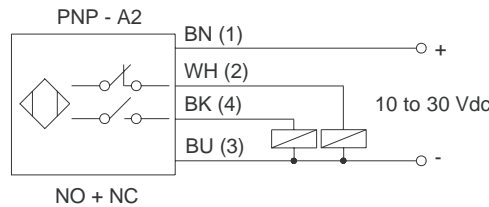
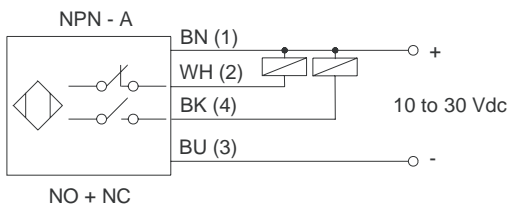
## Specifications

Type			Capacitive Proximity Sensor	
			Shielded - Flush Mount	Non-shielded - Non-flush Mount
Model Number	Cable Type	NPN	<b>CS5-18GM70-A-J</b>	<b>CS10-18GM70-A-J</b>
		PNP	<b>CS5-18GM70-A2-J</b>	<b>CS10-18GM70-A2-J</b>
	M12 QD Type	NPN	<b>CS5-18GI70-A-J-V1</b>	<b>CS10-18GI70-A-J-V1</b>
		PNP	<b>CS5-18GI70-A2-J-V1</b>	<b>CS10-18GI70-A2-J-V1</b>
Sensing Range			5 mm (adjustable)	10 mm (adjustable)
Hysteresis		10 ~ 20 %		
Repeatability		< 0.01 mm		
Supply Voltage		10 ~ 30 VDC incl. 10% ripple		
Current Consumption		< 10 mA max.		
Max. Switching Freq.		10 Hz		
Control Output		NPN or PNP Open Collector Transistor, 200 mA / 30 VDC Max.		
Operation Mode		Normally Open and Normally Closed		
Output Protection		Short circuit and Reverse polarity protection		
Sensitivity Adjustment		Single turn adjustment potentiometer		
Indicators		Output LED		
Conformity		CE		
Ambient Temperature		-25° to +70°C		
IP Protection		IP67		
Material		Nickel plated brass		



Note: Cables are not included with the QD sensor, please order separately.

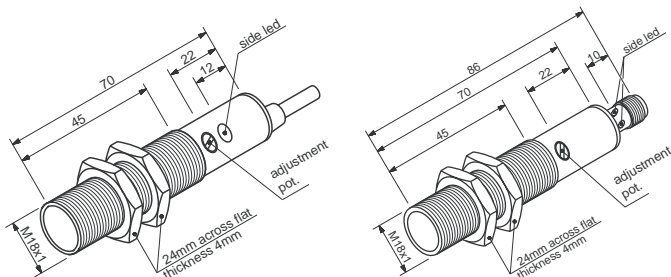
## Electrical Connection



## Dimensions (Unit: mm)

### CS5-18GI70

Shielded



### CS10-18GI70

Non-Shielded

